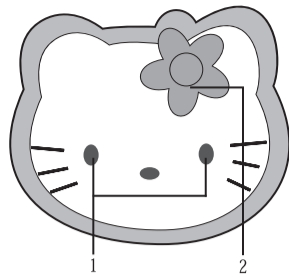
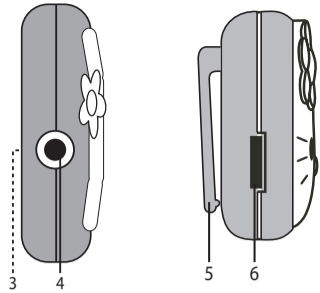


## LOCATION OF CONTROLS



1. TUNE/SCAN Up Button
2. MEMORY Button

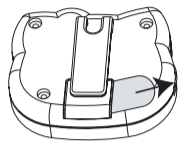


3. Battery Compartment (Rear)
4. Earbud Jack
5. Belt Clip
6. Rotary VOLUME/POWER Control

## POWER SOURCE

### BATTERY OPERATION

1. The batteries are pre-installed in the battery compartment at the factory. To activate the batteries, pull the battery spacer out as shown.
2. The battery life is about 8 hours of continuous playing.

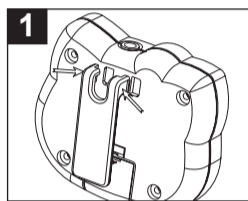


## POWER SOURCE (CONTINUED)

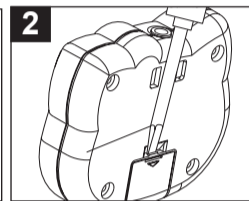
### BATTERY PRECAUTIONS

1. Use only the size and type of batteries specified
2. Be sure to follow the correct polarity, reversed batteries may cause damage to the device.
3. If the device is not to be used for a long period of time, remove the batteries to prevent damage or injury from possible battery leakage.
4. Do not mix different types of batteries together (e.g. Alkaline and Carbon-zinc) or old batteries with new ones.

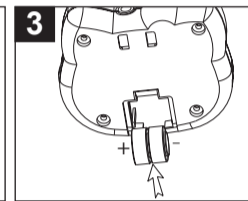
### BATTERY REPLACEMENT



Remove the belt clip by pulling it out of the slots while pressing both sides of the belt clip.



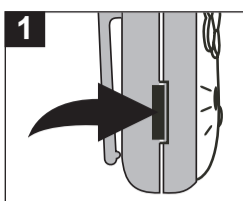
Open the battery compartment cover by pushing the tab of the cover using a small screwdriver tip.



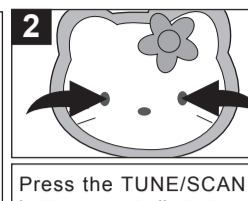
Replace the two old button batteries with new ones (LR44 or G13). If the batteries are inserted incorrectly, the unit will not operate. Close the battery compartment cover firmly and reinstall the belt clip.

## OPERATION

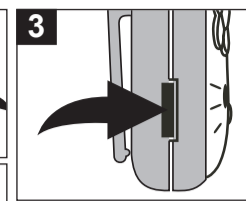
### LISTENING TO THE FM RADIO



Plug the earbuds into the Earphone jack, then insert the earbuds into your ears. Rotate the VOLUME/POWER control to turn the power on.



Press the TUNE/SCAN button repeatedly to tune in a station. To scan the stations, press and hold TUNE/SCAN Up button until a 'beep' sound is heard. The tuner will scan up the FM band until it finds a strong station and then stop. Repeat until the tuner stops on your desired FM station.



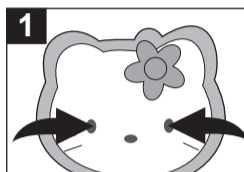
Rotate the VOLUME/POWER control to adjust the volume. Rotate the VOLUME/POWER control to the OFF position to turn the unit off.

### FM ANTENNA:

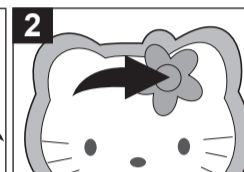
The FM antenna is built into the earbud cord, extend for best reception.

## OPERATION (CONTINUED)

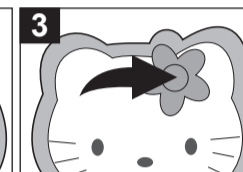
### MEMORY PRESETS



Up to four memory presets can be stored. Press the TUNE/SCAN Up button to select a desired station.



Press and hold the Memory button until a beep is heard and the station will be memorized. To store the next preset, press the Memory button again and repeat steps 1 and 2 (up to four presets).



To listen to a memory preset, press the Memory button repeatedly until the desired memory preset is selected.

To preserve the battery life, be sure to rotate the VOLUME/POWER control to the OFF position.

**CLEANING:** If your mini radio becomes dirty, wipe it with a soft cloth. Do not use thinner, benzene or similar chemicals as this will damage the unit.

## COMPLIANCE WITH FCC REGULATIONS

This equipment has been tested and found to comply with the limits for a Radio Receiver, pursuant to Part 15 of the FCC Rules. These limits are designed to provide reasonable protection against harmful interference in a residential installation. This equipment generates, uses and can radiate radio frequency energy and, if not installed and used in accordance with the instructions, may cause harmful interference to radio communications. However, there is no guarantee that interference will not occur in a particular installation. If this equipment does cause harmful interference to radio or television reception, which can be determined by turning the equipment off and on, the user is encouraged to try to correct the interference by one or more of the following measures:

- Reorient or relocate the receiving antenna.
- Increase the separation between the equipment and received.
- Connect the equipment into an outlet on a circuit different from that to which the receiver is connected.
- Consult the dealer or an experienced radio technician for help.

## SERVICE

Please refer to the instructions on the enclosed warranty card for returning your unit for service. When returning the unit, please remove batteries to prevent damage to the unit in transit and/or from possible battery leakage. We are not responsible for batteries returned with the product or for the cost of replacement.

### Distributed by:

Spectra Merchandising International, Inc.  
Chicago Industry Tech Park  
4230 North Normandy Avenue  
Chicago, IL60634, U.S.A.  
Please have model number ready, for Customer Service, call 1-800-777-5331



## MINI FM RADIO



## OWNER'S MANUAL KT2078

### WELCOME TO THE WORLD OF HELLO KITTY

We have taken great care to make sure that your Mini FM Radio was in perfect working order when it left our factory. It has been designed to give you many years of enjoyment and trouble free operation. Read this manual before operating this unit to become familiar with its features and obtain the performance that will bring you continued enjoyment for many years.

For future reference, record the serial number in the space provided.

Model Number: **KT2078**

Serial Number: \_\_\_\_\_

## IMPORTANT NOTES

Avoid using or storing this unit in locations described below:

- Places exposed to direct sunlight or close to heat radiating appliances such as electric heaters.
- Dusty places.
- Places subject to constant vibration.
- Humid or moist places.